



*Our intelligence is your security*

**FUJI**  
Intelligence

Add: No 135, Wandun road, Suzhou Industrial Park, China  
P.C: 213000  
Tel: 0086-0512-67152816  
Fax: 0086-0512-67152689  
E-mail: [info@intfujielevator.com](mailto:info@intfujielevator.com)  
Web: [www.intfujielevator.com](http://www.intfujielevator.com)

**FUJI**  
Intelligence

Passenger Elevator  
Panoramic Elevator  
Hospital Elevator  
Home Lift  
Car&Freight Elevator



# FUJI

Intelligence

FUJI Intelligence Elevator Co., Ltd is a company that specialized in high-tech elevators, escalators and passenger conveyor industry. Factory now covers an area of nearly 20000 m' production base in Suzhou city, Jiangsu Province. There are about 200 employees currently, among which 35% are professional technicians forming a professional management and technical team.



Over the years, FUJI Intelligence insists on the market-oriented and customer-focused idea to establish and develop the "Trine Marketing System" integrating sale, installation and maintenance. Meanwhile, Fuji Intelligence has been focusing on technological innovation and development so that its elevator technology takes the lead in the global market.

As a professional elevator supplier, FUJI Intelligence always absorbs and learns world advanced concepts and management systems in order to keep its corporate management in the same pace with international trend. FUJI Intelligence has passed ISO9001 quality management system, ISO14001 environmental management system and GB/T28001 occupational health system certification, and further promoted the establishment and application of corporate information system to support its business and operation with advanced technologies and scientific management ideas







### Reliable operation resists shock-proof interference

Escalator truss is installed in construction. Earthquake restriction sets between truss and construction. Earthquake restriction allows movement within certain extent. It thus suits floor swing during earthquake and protects escalator. Firm and stable connection between housing and escalator can adapt to housing swing. It ensures escalator safety in earthquake.

Perfect quality deducts strong  
sense of responsibility



### Self-start of infrared ray tester

Automatic start escalator includes step, drive motor that drives step operation, control device that controls motor operation. It sets energy-saving device including tester that tests escalator load, starter that drives driving motor. It is infrared tester. It is safe with energy-saving.

### Energy-saving control system

New and practical patent: Infrared ray detector in escalator entry probes whether passenger enters into escalator or not. Output terminal of infrared ray detector connects with input terminal of controller. Controller has bilateral connection with timer and frequency changer. Controller also links with vibration-testing sensor. Vibration-testing sensor connects with escalator motor. Organic connection of these technical characteristics composes a kind of energy-saving escalator control system.





FUJI Intelligence serial escalator and conveyor use the humane design ideas. It integrates aesthetics, safety and environmental protection into one. It provides vast customers with the dignified outline, the reliable quality, the outstanding performance.

- The truss adopts the robotic welding technology, which greatly enhance the manufacturing process. It has lean quality and it is sturdy and durable, beautiful and elegant.
- The integral aluminum frontier plate is tough and rugged, stylish and light weighted, and easy for maintenance.
- The diameter of the contact roller is  $\phi 70$ . This can effectively reduce the roller pressure, and improve the step chain breaking force.
- Jinshou B-type escalator adopts the stylish and beautiful stainless handrail bracket suitable for large lifting height.
- Outside of skirting panel, there is a transparent friction-reducing coating, effectively reducing the friction loss between the steps and skirting panel.
- The wedge has a spring structure and glass bracket. By tightening the spring, users can ensure that the wedge and glass is closely laminated, which is sturdy and steady and easy to be installed.



The diameter of the contact roller increases → Reduce roller pressure → Step chain breaking force increase greatly → Safety factor improves



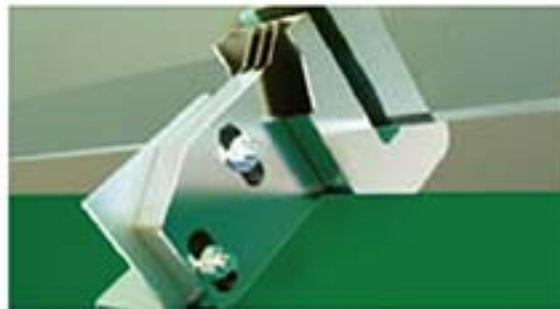
### Integrated Design



The integrated design of upper and lower drive and step track can avoid the step moving to ensure a smooth transition to the curve track and drive, and reduce the vibration when the step running.

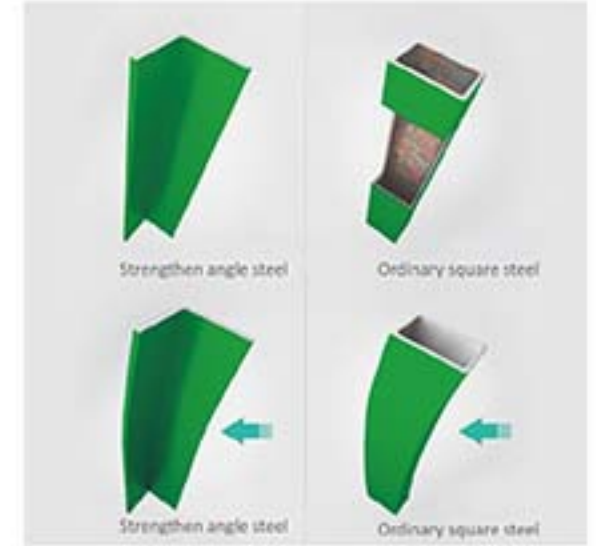


Wear-resisting Painted Skirt Panel (Optional)



Wedge with Spring Structure and Glass Bracket (Optional)

### Full Angle Steel Section Bar Truss



The use of angle steel for the whole truss brings better performance in antirust and usability under all tough conditions. The deflection of strengthen angle steel truss is less than ordinary square steel truss under the same cross-section case, and the strengthen angle steel truss is not easily deformed.



Robotic Welding



Stainless Steel Handrail Bracket

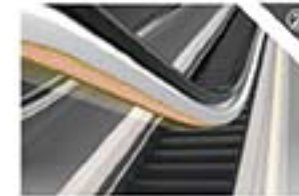




### Handrail Lighting



White(Optional)



Yellow(Optional)

### Running Direction Indicator

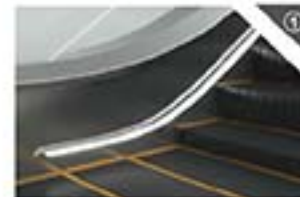


Transparent plastic LED display (Optional)

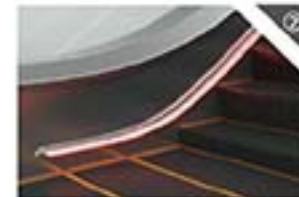


Black plastic dot matrix display (Optional)

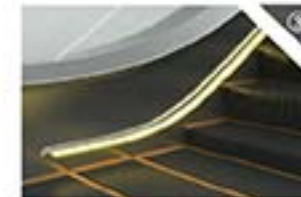
### Skirt Lighting



White(Optional)

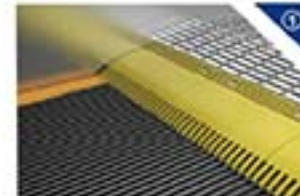


Red(Optional)

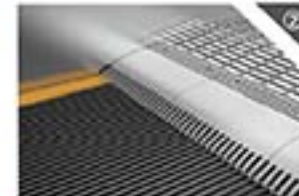


Yellow(Optional)

### Combs



Yellow polyester(Standard)



Aluminum(Optional)

### Inner and Outer Decking

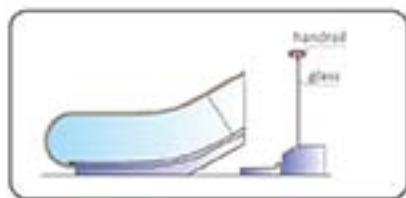


Hairline stainless steel(Standard)

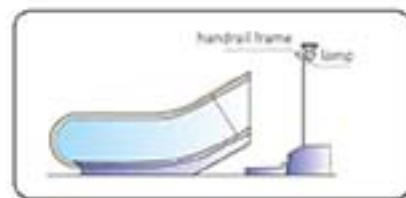


Aluminum alloy(Optional)

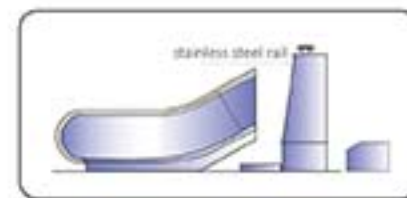
### Balustrade Design



Type-I(Slim)



Type-P(Normal),w Lighting(Inclined)



Type-T(Inclined)

### Handrail Color



Black(Standard)



Gray(Optional)



Red(Optional)



Yellow(Optional)

Note: Pictures might be slightly different from actual colors. Please take real product as criterion.

### Step



Black stainless steel with yellow alert(Standard Room)



Aluminum with Security Cord (Optional)

### Pallet

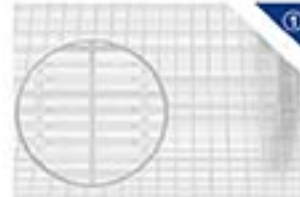


Aluminum alloy with the yellow line(Standard)

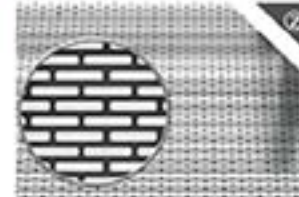


Black stainless steel with yellow warning line(Optional)

### Front Panel



Square groove black painting (Standard)



Black coating in the slot of the box (Optional)



Striped groove black paint (Optional)

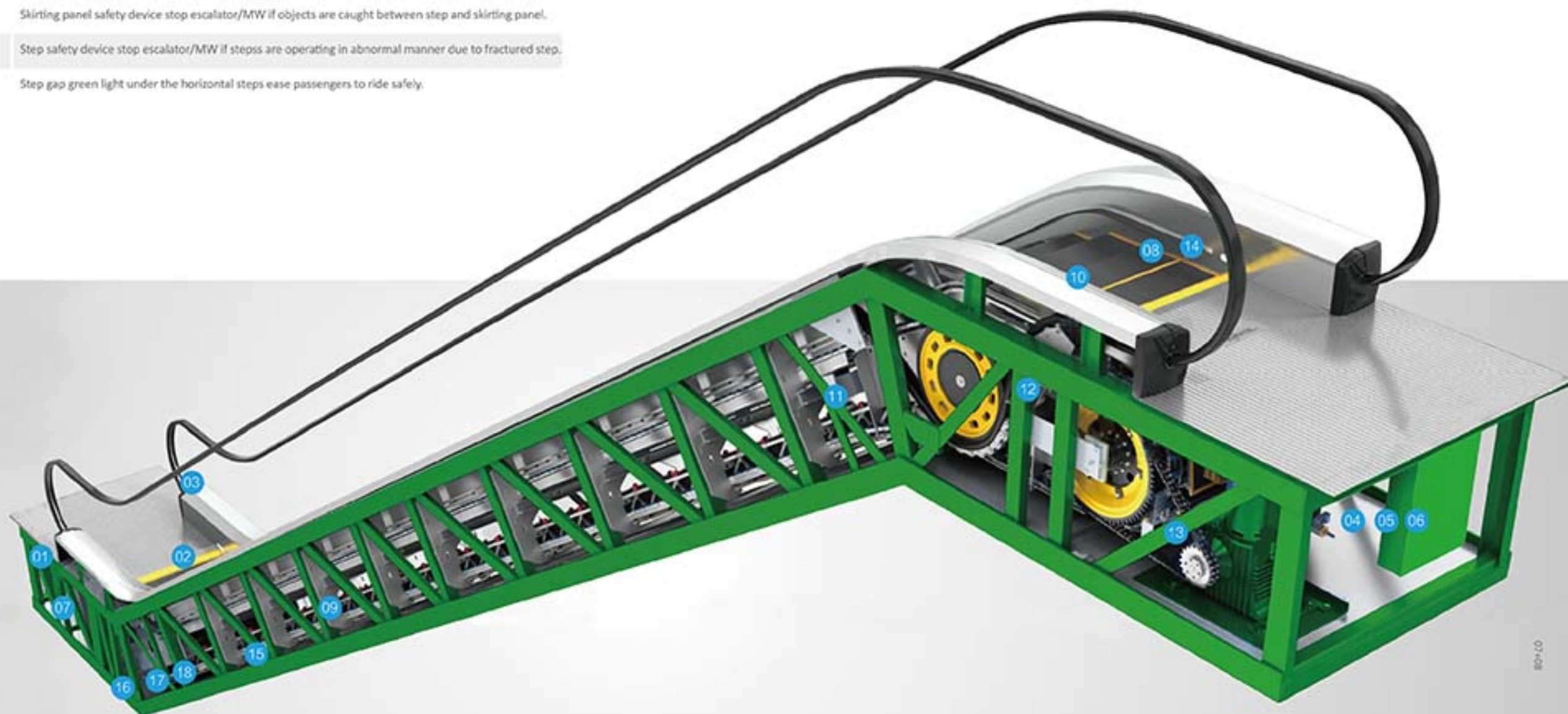




## Multiple Safety Protection Function

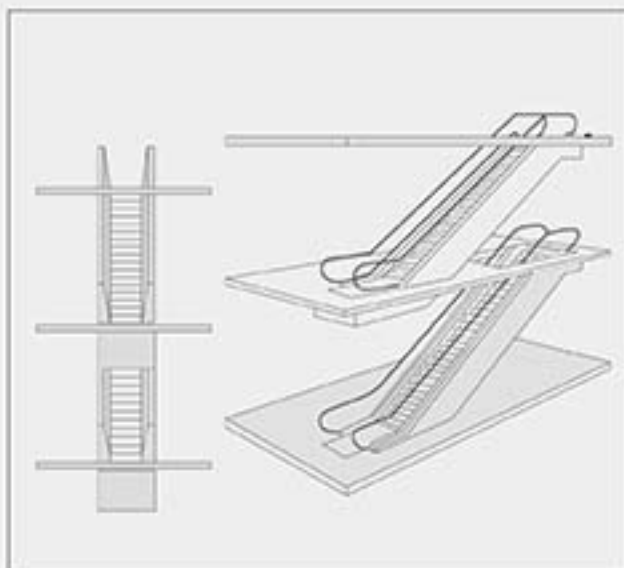
Function name	Function description
01 Emergency stop button	Emergency stop device in an emergency, stop escalator/MW immediately if pressed.
02 Comb plate safety device	Comb plate safety device stop escalator/MW if objects are caught between comb plate and step treads.
03 Handrail entry safety device	Handrail entry safety device stop escalator/MW if hand or object is pulled into the handrail entry.
04 Phase(fault phase) protection	Phase monitoring device stop escalator/MW if missing phase or wrong phase occurs.
05 Over speed protection device	Over-speed detector stop escalator/MW if operating above normal speed.
06 Non operation reversal protection device	Non-reversing safety device stop escalator/MW if its direction of operation is reversed.
07 Cascade chain protection device	Step chain safety stop escalator/MW if the step chain breaks or becomes loose.
08 Apron protection device	Skirting panel safety device stop escalator/MW if objects are caught between step and skirting panel.
09 Cascade collapse protection device	Step safety device stop escalator/MW if steps are operating in abnormal manner due to fractured step.
10 Step gap lighting	Step gap green light under the horizontal steps ease passengers to ride safely.

Function name	Function description
11 Additional brake device	Auxiliary brake stop escalator/MW if the driving chain breaks or over-speeds.
12 Safety device of brake shoe wear	Brake lining wear safety device stop escalator/MW if the lining of main brake is worn abnormally.
13 Drive chain protection device	Drive chain protection device stop escalator/MW if the driving chain breaks or excessively loosen.
14 Comb plate lighting	Comb plate light on both side of comb plate ease passengers to ride safely.
15 Arm speed detection device	Handrail speed detector stop escalator/MW if handrail is below normal speed due to handrail breakage or elongation.
16 Handrail broken device	Handrail broken safety device stop escalator if handrail breaks or stops.



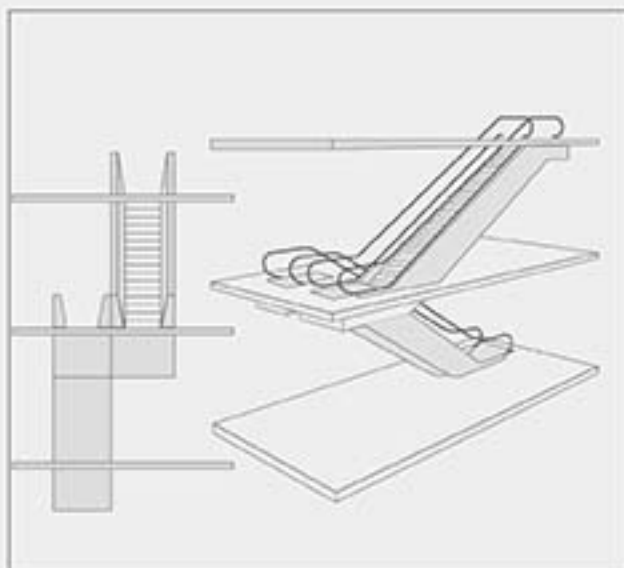


## Diverse products, reasonable layout and scientific planning



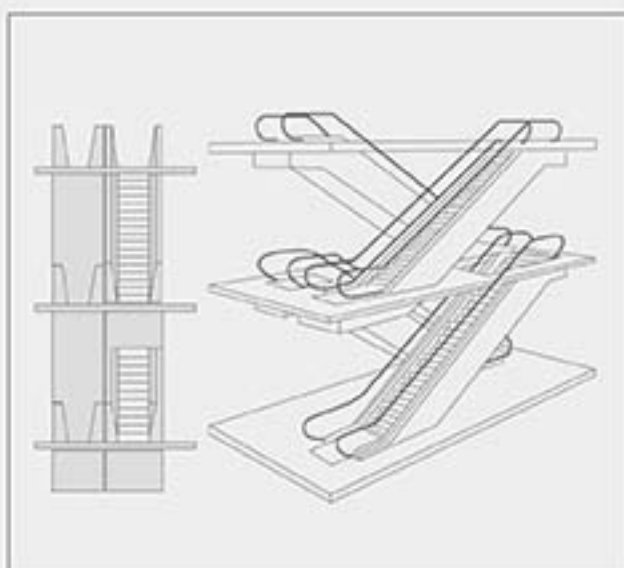
### Interrupted arrangement (one travel direction)

This arrangement the number of passengers will cause inconvenience, but the mall owners, because the transfer to the space between the escalator up or down the escalator and intermittent possible for customers to see the exhibits of specially arranged.



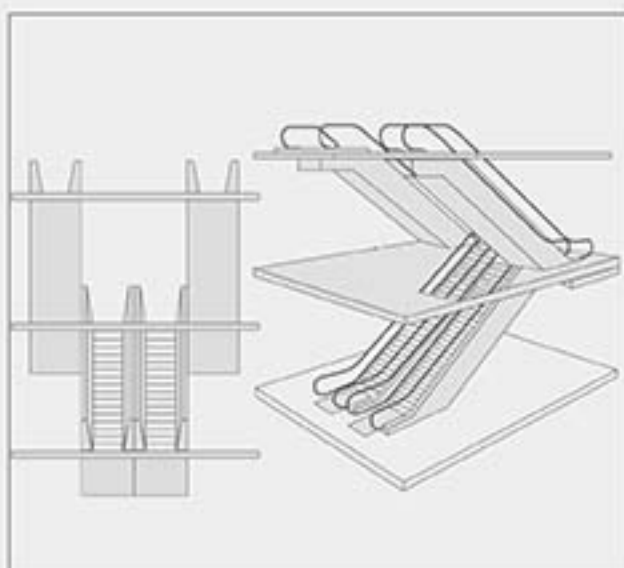
### Multi-level criss-cross arrangement (continuous traffic flow, two travel directions)

This arrangement is mainly used for small department stores, three consecutive sales floor. This arrangement than intermittent arranged need more space.



### Continuous arrangement (one travel direction)

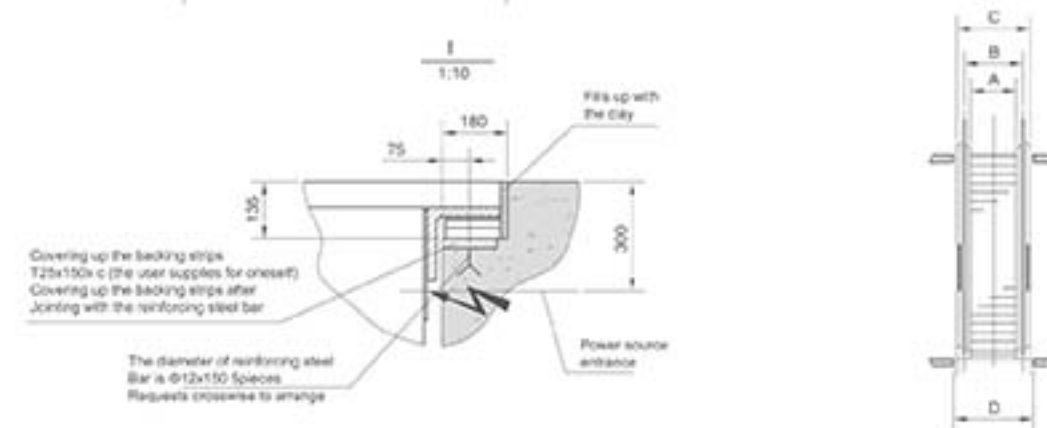
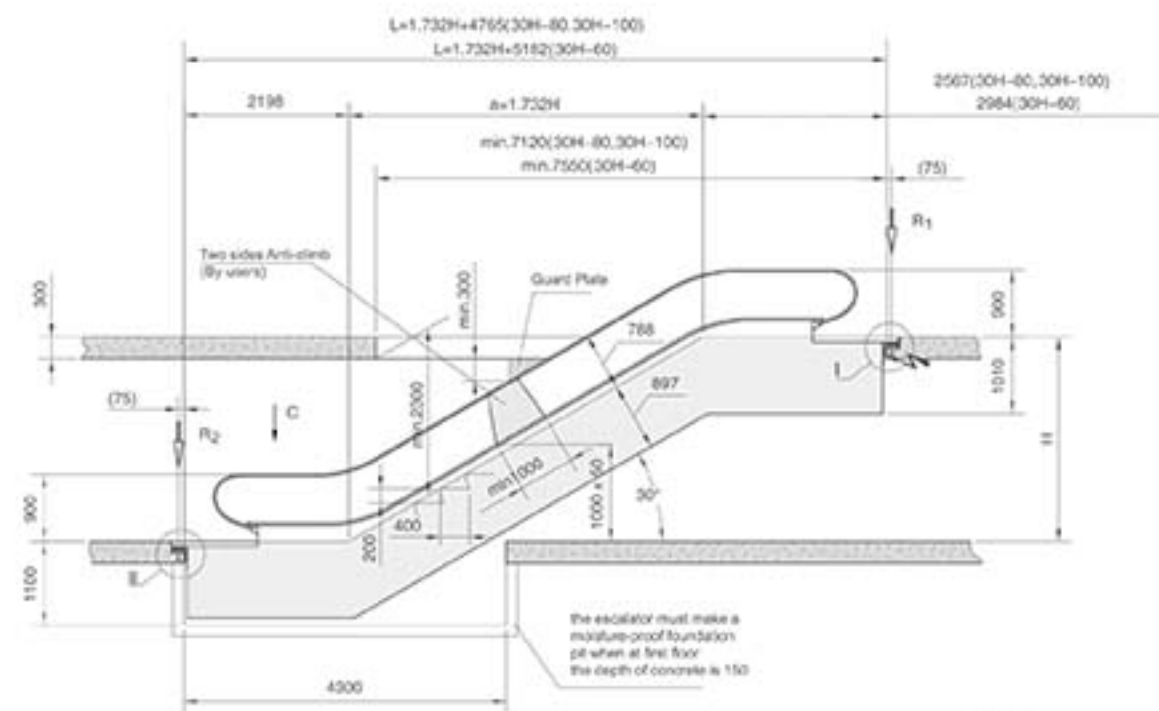
This arrangement is mainly used in large department stores, public buildings and places of public transport, the number of transport between the floors of these places should be kept as small as possible.



### Parallel arrangement (continuous traffic flow, two travel directions)

This arrangement is mainly used for large traffic shopping malls and public transport facilities. When three or more escalators, it should be possible to change the direction of movement in accordance with the traffic. This arrangement is more economical, because without the inner baffle.

## CF30H Escalator Series



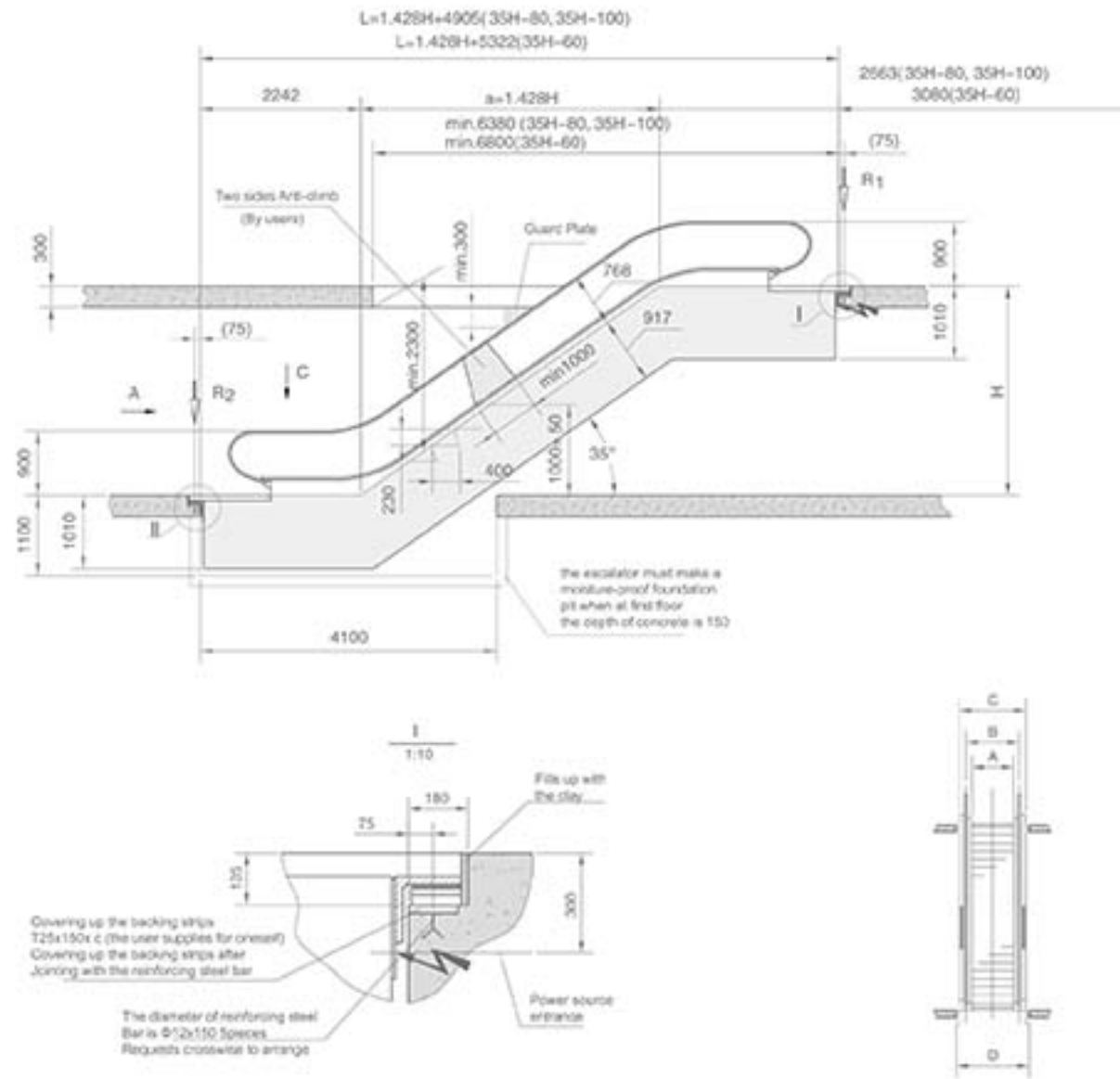
Technical Speed (mm)	Self-weight (KN)	Support counterforce (KN)		Technical Speed (mm)	Self-weight (KN)	Support counterforce (KN)		Size code	BCF 30H-60	BCF 30H-80	BCF 30H-100
H	G	R1	R2	H	G	R1	R2	A	600	800	1000
3000	65.0	51.0	55.0	4500	77.8	75.2	68.2	B	835	1036	1236
3100	65.8	62.0	55.8	4700	78.7	77.4	69.4	C	1200	1400	1600
3200	66.6	63.0	56.6	4800	79.5	78.6	70.6	D	1260	1460	1660
3300	67.4	64.0	57.4	4900	80.2	79.8	71.8	E	1950	2110	2310
3400	68.2	65.0	58.2	5000	81.0	81.0	73.0	F	2640	2860	3260
3500	69.0	66.0	59.0	5100	81.8	82.0	73.8	G	3320	3510	3920
3600	70.0	66.8	59.8	5200	82.6	83.0	74.6				
3700	70.8	67.6	60.6	5300	83.3	84.0	75.4				
3800	71.6	68.4	61.4	5400	84.1	85.0	76.2				
3900	72.2	69.2	62.2	5500	85.0	85.0	77.0				
4000	73.0	70.0	63.0	5600	85.6	85.8	77.8				
4100	73.9	71.1	63.8	5700	86.3	87.5	78.6				
4200	74.7	72.0	64.6	5800	86.9	88.4	79.4				
4300	75.6	73.0	65.4	5900	87.4	89.2	80.2				
4400	76.3	74.0	66.2	6000	88.0	90.0	81.0				
4500	77.0	75.0	67.0								

In the table G,R1,R2,R3 are the BCF30H-100 escalators self-weight and supporting reaction; FCF30H-80 escalators self-weight and supporting reaction for table in value 50%. FCF30H-60 escalator self-weight and supporting reaction for table in value 80%.





## CF35H Escalator Series

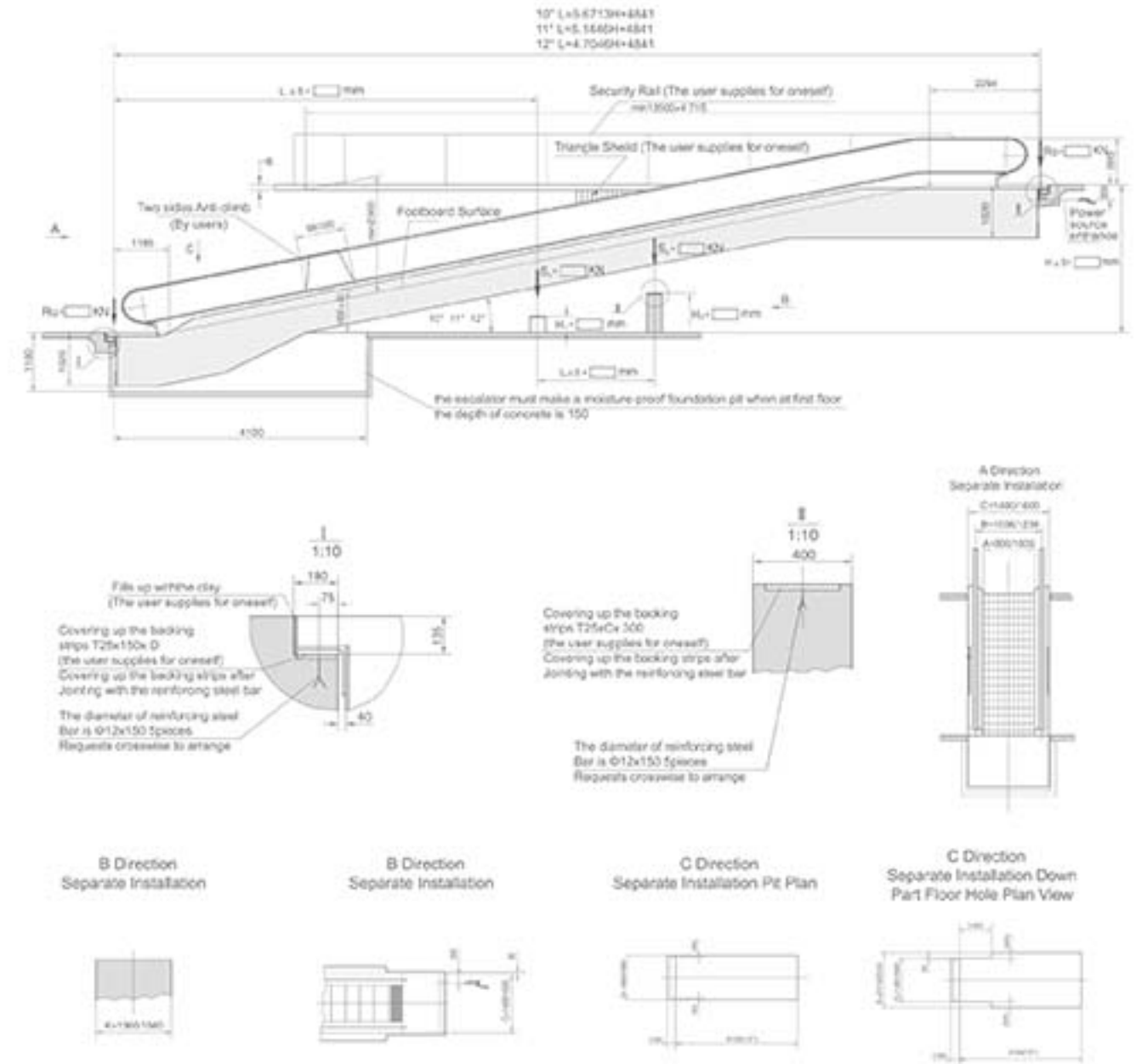


Technical Speed (mm)	Self weight (KN)		Support counterforce (KN)	
	G	R1	R2	R3
H	G	R1	R2	R3
3000	62.0	53.2	47.9	
3100	62.8	54.0	48.6	
3200	63.6	54.9	49.3	
3300	64.4	55.8	50.0	
3400	65.2	56.7	50.7	
3500	66.0	57.5	51.4	
3600	66.6	58.2	52.1	
3700	67.3	58.9	52.8	
3800	67.9	59.6	53.5	
3900	68.5	60.3	54.2	
4000	69.0	61.0	54.9	
4100	69.8	61.9	55.6	
4200	70.6	62.8	56.3	
4300	71.4	63.6	57.0	
4400	72.2	64.5	57.7	
4500	73.0	65.4	58.4	

Size code	BCF 35H-60		BCF 35H-80		BCF 35H-100	
	H	G	R1	R2	H	G
A	600	800	1000			
B	836	1036	1236			
C	1200	1400	1600			
D	1260	1460	1660			
E	1910	2110	2310			
F	2660	2860	3260			
G	3310	3510	3910			

In the table G, R1, R2, R3 are the BCF35H-100 escalators self-weight and supporting reaction. CF35H-80 escalators self-weight and supporting reaction for table in value 90%. CF35H-60 escalator self-weight and supporting reaction for table in value 80%.

## CRXB Moving Walk Series



Technical Speed H (mm)	10'				11'				12'			
	L1 (mm)	L2 (mm)	H1 (mm)	H2 (mm)	L1 (mm)	L2 (mm)	H1 (mm)	H2 (mm)	L1 (mm)	L2 (mm)	H1 (mm)	H2 (mm)
2000-2600	8000		282		2000-2600	7500	310		2500-3000	7500	466	
2500-3000	9000		459		2700-3300	9000	622		3100-3700	9000	785	
3100-3700	10500		773		3400-4000	10500	913		3800-4400	10500	1104	
3600-4200	12000		998		4000-4600	12000	1205		4400-5000	12000	1423	
4100-4700	13500		1252		4500-5100	13500	1496		5000-5600	13500	1742	
4400-5000	15000		1516		4900-5500	15000	1788		5400-6000	15000	2061	
4700-5300	16500	13000	635	2751	5200-5800	16500	2080	3148	5700-6300	16500	2380	3549
5700-6300	18000	13000	417	2927								

Size Code	A	B	C	D	E	F	G	K
CRXB-80	800	1036	1400	1460	2110	2860	3510	3360
CRXB-100	1000	1236	1600	1660	2310	3260	3910	3560